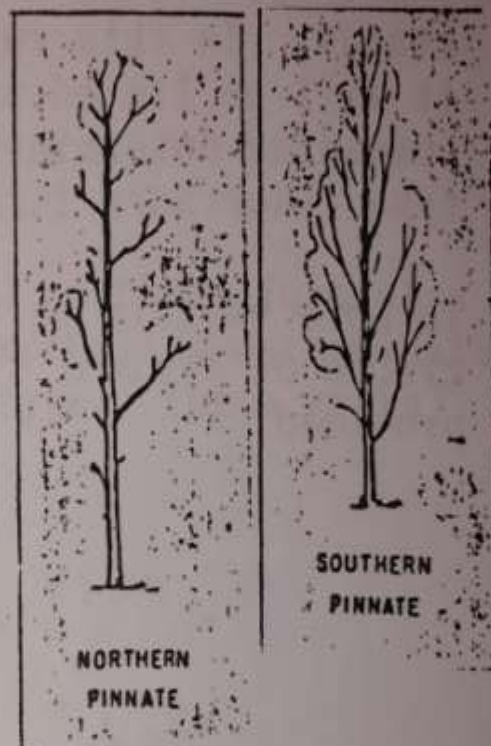


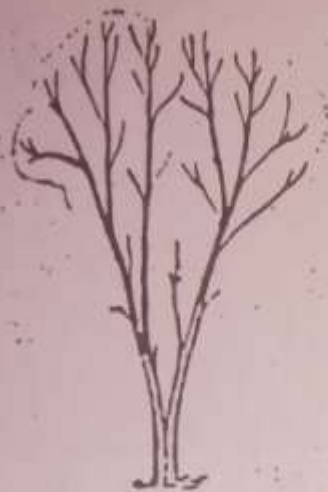
Black Locust

Finding and Using
Superior Genetics

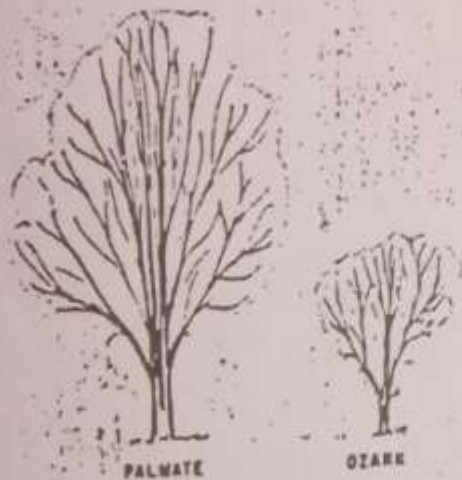
Carl Albers

Pinnate: A single, straight stem, usually undivided (not forked) and free of crooks. This growth habit (determinative*) is maintained in open areas as a single plant, and in closed stands or forest conditions. In this report, it will be listed as a pinnate determinative type.





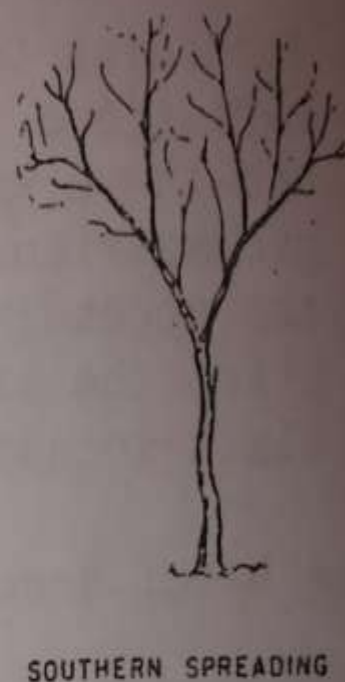
NORTHERN DIFFUSIVE



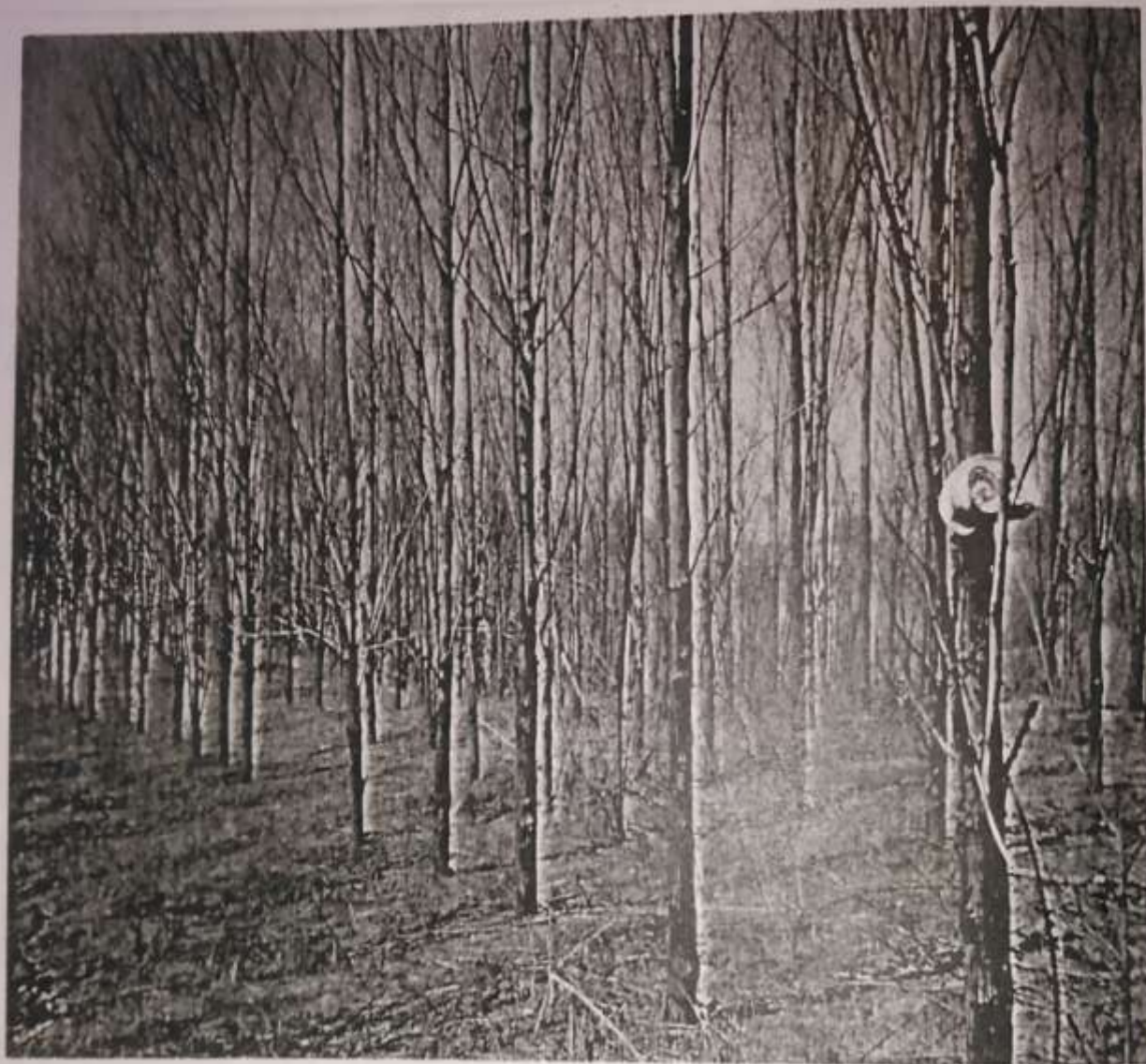
SOUTHERN DIFFUSIVE

Palmate: In the open, this form has a profusion of thin forked branches without a central stem. In closed stands (forest conditions), it will develop one or more central stems, usually erect with few side branches. This change from no central stem in open areas to a central stem in closed stands is called a "diffusive" variation. In this report, palmate clones will be listed as a palmate-diffusive[†] type resembling the northern form.

Spreading: Trees of this growth form have many large and spreading side branches. The number of crooks and forks is quite variable. Straight stems do not occur frequently. This spreading genetic characteristic is a determinative type. It will occur in closed stands as well as in open stands. In this report, it will be listed as a spreading-determinative type. (Northern form)







Adjacent to the above. BN 4191 a pinnate-determinative growth type showing an upright, single stem.



A northern form of a
spreading-determinative
type. (open grown)





Clone Your Own

- Look for arrow straight trees
- Dormant root cuttings (late March – April)
- ½ to 1-inch diameter; 6-inch length
- Flat cut (trunk side); angled (root tip)
- Add topsoil from around healthy trees to potting mix





Black Locust Plantations

(Posts and Timber)

- Well drained, fertile soils, good internal drainage (alfalfa soils)
- Soil test – get alfalfa recommendations
- Adjust pH to 6.5 or 7
- Most soils will require P & K; build OM
- Remove brood trees during dormant season; chip or burn to kill larvae
- Denser shade/more leaf litter in mixed stands, crop tree management = less locust borers
- Control brush/weeds prior to planting
- Layout rows on a 1 percent slope













Growing Superior Black Locust Timber
Good genetics + Good growing practices



